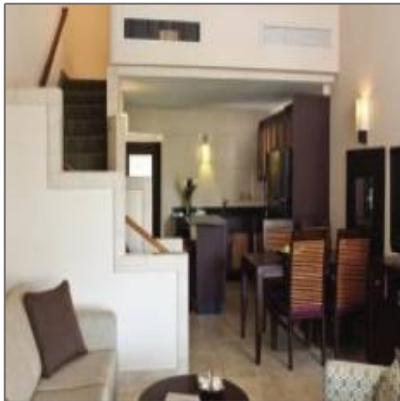


# 479 Chocolate Hole

750 Sqft - St John, Virgin Islands 00830



**ONE-BEDROOM TOWNHOUSE**  
**VIRGIN GRAND**  
**750 SQUARE FEET\* • SLEEPS UP TO 4 ADULTS**

[Share this villa](#)

Each one-bedroom townhouse offers you a quiet respite from island activity. Exquisite furnishings and intuitive details will create a relaxing setting, while the following amenities anticipate your needs:

- Split level, angled floor plan with two bedrooms
- Gracious open staircase serves upper-level master bedroom
- King-size Westin Heavenly® Bed and HDTV in master bedroom and Westin Heavenly® Bath
- Living area with sofa-bed
- Entertainment center in living area with HDTV, cable and four® sound system
- Dining area
- Fully equipped kitchen with full-size gas, self-cleaning oven, microwave oven, refrigerator with freezer, dishwasher, coffee maker, toaster, blender and juicer
- Washer and dryer
- Furnished terrace, tile balcony
- Granite-like marble flooring
- Individually controlled central air conditioning
- In-room safe

\*Square footage is approximate. All amenities are subject to change. Furnishings may vary. Actual rendering. Further details may vary.

## Property Description

Enjoy week 1 guaranteed in a beautiful spacious 1 bedroom/2 bathroom at the Westin St. John. Vaulted ceilings, full kitchen, washer / dryer, balcony. Access to pool and grills located next to building in addition to the 1/4 acre swimming pool on main property. Also comes with 95,700 "options" points which can be used to trade to any of the Westin or Sheraton vacation ownership properties such as Vail, Cancun, Scottsdale and Hawaii. Same unit also available week 2, for a 14-night stay in the same unit.

## Basic Details

Property Type:	<b>Fractional Timeshares</b>
Listing Type:	<b>For Sale</b>
Listing ID:	<b>20-251</b>
Price:	<b>\$17,000</b>
Bedrooms:	<b>1</b>
Rooms:	<b>0</b>
Bathrooms:	<b>2</b>
Square Footage:	<b>750 Sqft</b>
Year Built:	<b>1989</b>
Country:	<b>US</b>
State:	<b>VI</b>
Quarter:	<b>Cruz Bay</b>
Island:	<b>St John</b>
Zipcode:	<b>00830</b>

## Address Map

Longitude: **W65° 12' 58.8"**

Latitude: **N18° 19' 2.2"**